

# Contents

---



## **CORNILLEAU, A PHILOSOPHY IN ACTION**

Together we play .....	6
Our product promises .....	8
Durable by design .....	10
A unique heritage .....	12
Cornilleau and CSR .....	14
Innovation as a driving force .....	18
Our design philosophy .....	20
Technical excellence .....	22
Serious about quality .....	24
Happy to help .....	26

## **PASSIONATE ABOUT PING-PONG**

Cornilleau and outdoor ping-pong .....	30
Take your table for a spin .....	32
Accessories and finishes .....	34

## **PING-PONG TABLES**

Sport outdoor tables .....	38
Performance outdoor tables .....	46
Leisure indoor tables <b>NEW</b> .....	54
Institutional tables <b>NEW</b> .....	62
Competition tables <b>NEW</b> .....	78

## **RACKETS, BALLS, ACCESSORIES**

Outdoor rackets .....	98
Indoor rackets .....	108
Balls .....	118
Tables covers .....	119
Competition accessories .....	120
Posts and nets .....	121

## **COMPARATIVE TABLES**

Tables .....	124
Rackets .....	130





4  
—

## Cornilleau, a philosophy in action

---

*Forging connections  
and spreading happiness  
through play with products  
that offer superior quality,  
style, and durability.*



5  
|

# Together we play

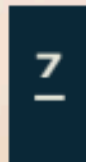
"Sometimes you can get so caught up in the whirlwind of modern life, that you forget what really matters: sharing quality time together. The joy of play is second to none and comes with endless benefits. We're passionate about building on this foundation, helping everyone who uses our products to live their best life, for years to come. This philosophy is reflected in our approach, which combines the fun and positive impact of playing games with the





very high standards we set for our products. There are so many benefits to playing games, but we think the way play can bring people together, whether for a one-off game or for a lifetime, is extraordinary. We're so passionate about it, we chose it for our company motto: **Together we play.** "

Michel Zany, CEO





18

# Our product promises

---

Each and every Cornilleau product reflects our unwavering commitment to you. As a brand, we prioritize our customers' complete satisfaction.



## Innovation

Easy to use = used more. We always put our customers first.

## Durability

Consistent high quality, year after year. Robust designs that are easy to repair.

## Design

Combining fun, functionality and style. Products that blend seamlessly into different settings.

## Quality

From beginners to experts, everyone deserves to enjoy the best possible gaming experience.

## Responsibility

We limit our environmental impact and promote positive values.



## Durable by design

---

Cornilleau has been synonymous with durability for many years, with our products undergoing rigorous testing in our laboratories and then under real-life conditions. This commitment is backed by substantial warranties: 3 years for indoor tables and a remarkable 10 years for outdoor tables.





Warranty  
indoor tables



Warranty  
outdoor tables



Spare parts  
availability

Our brand has been committed to designing repairable products for decades, with customers being able to buy spare parts for at least 20 years after their original purchase, and sometimes even longer. The goal is simple: for people to enjoy playing their favourite games for as long as possible, and for our products to be passed down from one generation to the next.

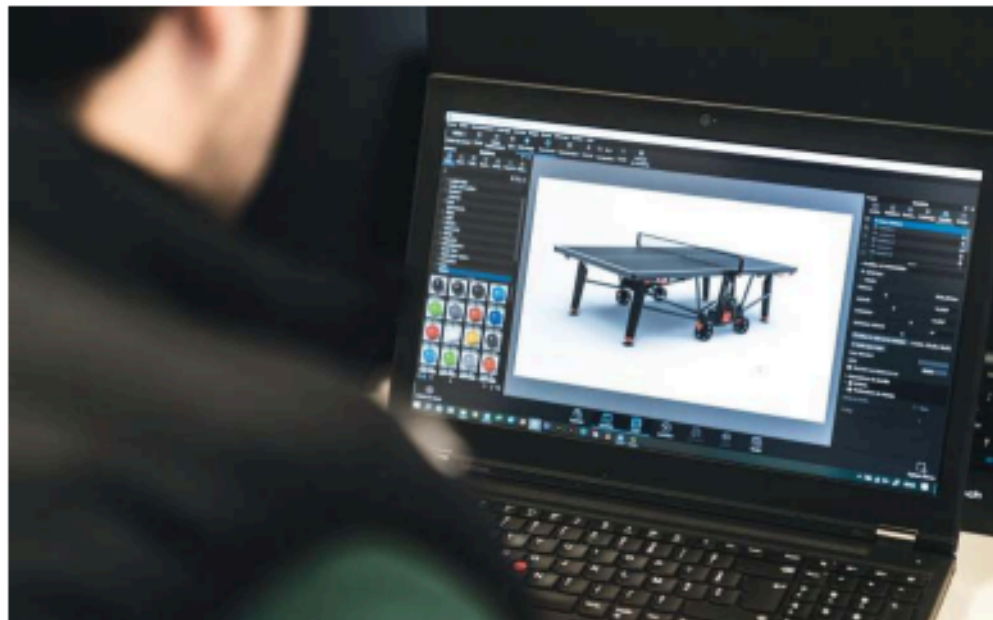


## A unique heritage

---

Cornilleau promises its customers an unparalleled game experience. The only way to keep this promise is to have complete control over the entire product chain: from the initial concept to full-scale production, including the design, prototyping and laboratory and field-testing phases. All these skills and expertise are located in-house at two sites in the Picardy region of France.

Cornilleau's heritage in joinery and cabinet-making has instilled a sense of pride in delivering exceptional products. Since its industrial transformation in the 1970s, the brand has cultivated a deeply rooted culture of quality. Listening carefully to its customers, Cornilleau is constantly improving its products to meet their needs, while at the same time maintaining the quality and durability that have made it so successful.





# Cornilleau and CSR

---

The Cornilleau Corporate Social Responsibility policy centres on two key areas: reducing the impact of its products on the environment throughout their life cycle, and promoting education, inclusion, well-being and health through social initiatives.

14  
—



encouraging  
recycled  
materials

**80%**  
of suppliers located within  
a 200km (125 miles) radius

**-50%**  
of its industrial  
waste over  
the last 3 years



## Responsible production

From design to manufacture, through distribution and end of life, there are many stages in a product's life cycle. Cornilleau strives to minimize its impact on the environment at every stage. This encompasses the durability of the product of course and how hard-wearing it is, but also how easy it is to repair. With 80% of suppliers located within a 200km (125 miles) radius, our focus on manufacturing our products within France is part of the same approach, while at the same time supporting the local economy. The brand uses recycled materials wherever possible, including both metal and plastic, while maintaining the same high level of product performance. The Softbat outdoor racket is made from almost 60% recycled materials. By encouraging the recovery and recycling of tables and parts that are no longer in use, Cornilleau has halved the weight of its industrial waste over the last three years.

# Cornilleau and CSR

---

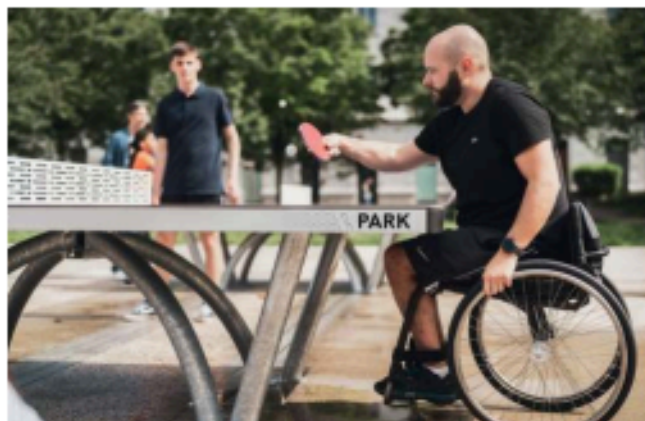
## Social initiatives

Cornilleau works closely with partners including Ping Sans Frontières, the FFTT (French Table Tennis Foundation), the FFH (French Handisport Federation) and the Team's players to draw on the power of table tennis to promote education, inclusion, well-being and health.

16



In its third year, the 1 Ecole 1 Table (1 School, 1 Table) initiative provided 248 schools with ping-pong tables to encourage sport in schools and contribute to the recommended 30 minutes of physical activity every day. Cornilleau was proud to co-finance these tables along with the FFTT and private sponsors.



Maxime Thomas, a para table tennis player who has won medals at various Olympics, is working with Cornilleau to ensure that the competition and leisure tables are as ergonomic as possible for people with reduced mobility.

Cornilleau is committed to supporting the development of outdoor ping-pong, in partnership with the FFTT, with the long-term goal of helping local authorities to create practice areas open to everyone. Below, a site with 8 Park tables opened in Moirans, south-eastern France, in 2024.



Cornilleau supports Ping Sans Frontières by donating equipment, as well as helping to collect ping-pong racket covers from clubs for its educational projects. This year, the company supplied the association with a substantial number of new products: around a thousand ping-pong racket rubbers and 1,500 fabric items.



Cornilleau supplies the required equipment to Ping Sans Frontières teams competing in the leisure league. Each of these teams includes at least one person with a disability.



Cornilleau provides practice kits (rackets, balls, clothing) to clubs participating in the Alzheimer's and Parkinson's ping pong programmes. Table tennis is used to reduce the effects of these neurodegenerative diseases.

# Innovation as a driving force

---

Cornilleau has always been committed to staying one step ahead in rethinking how things are used. This ethos requires significant investment in design, research and development. With 10% of its workforce working exclusively in these three areas, the company is constantly pushing forward, ensuring it stays ahead of the game.





# Our design philosophy

---

Every line, every piece of equipment, and every detail is designed from two perspectives: aesthetics and functionality. This approach allows us to create products that provide the best possible experience for each and every user. Our philosophy focuses not just on ergonomics, but also on performance and durability, so the pleasure of playing can be shared across the generations.

20  
—



Cornilleau is working hard to reduce its impact on the environment, building responsibility into every design from the very start. Durable materials, environmentally-friendly design, and standard parts that make repairs even easier... every single design choice is part of our responsible approach.

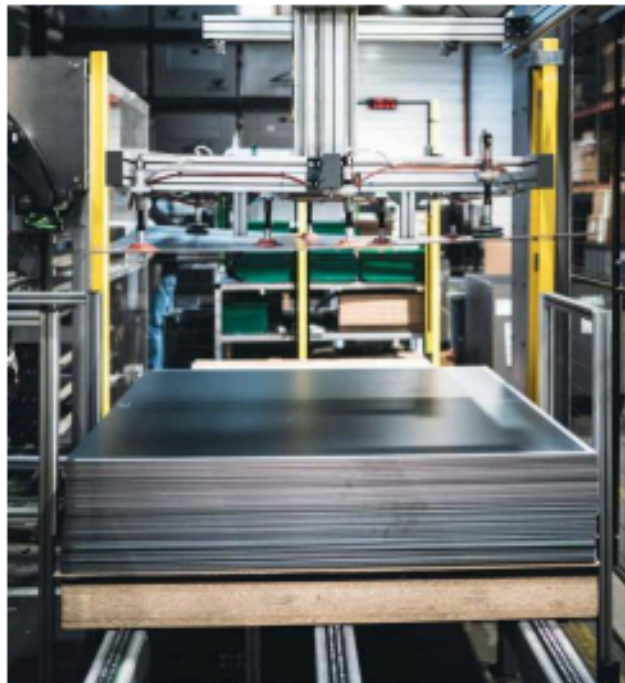


# Technical excellence

---

Expert craftsmanship with industrial quality. There is a very close relationship between research and development, product design and product manufacturing. It's the only way to produce large volumes of high-quality products that are constantly evolving and being improved. This philosophy has been passed down from Pierre Cornilleau, who implemented it back in the 70s, producing up to 100,000 world-class ping-pong tables every year.

22  
—







24  
—

## Serious about quality

---

We test each and every component of all our products in our in-house laboratory to assess its mechanical integrity, strength and durability. This is followed by rigorous testing under real-life conditions. Even when a product is on the market, we don't stop there - we are constantly looking for ways to make it even better.



# Happy to help

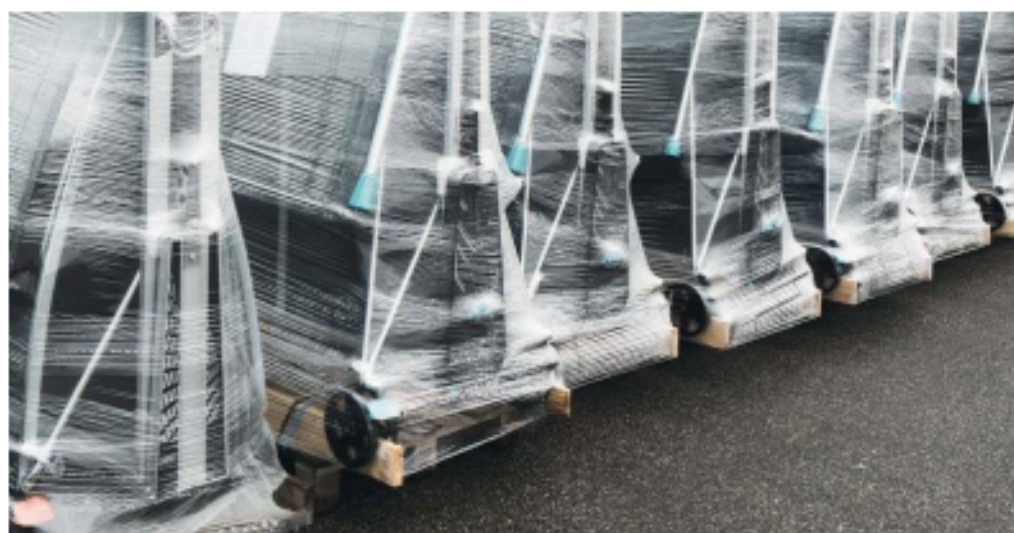
---

We have a specialist team based in our head office dedicated to providing outstanding support to all our customers, retailers, and partners alike. Tasked with assisting, advising and offering effective solutions, this team is supported by experts at the same location to provide the best possible response to your queries. Spare parts are available for at least 20 years after you purchase a product from us. You can reach out to our customer service team or visit our dedicated after-sales website:

Europe: [cornilleau-services.com/en](https://cornilleau-services.com/en)

UK: [uk.cornilleau.com](https://uk.cornilleau.com)

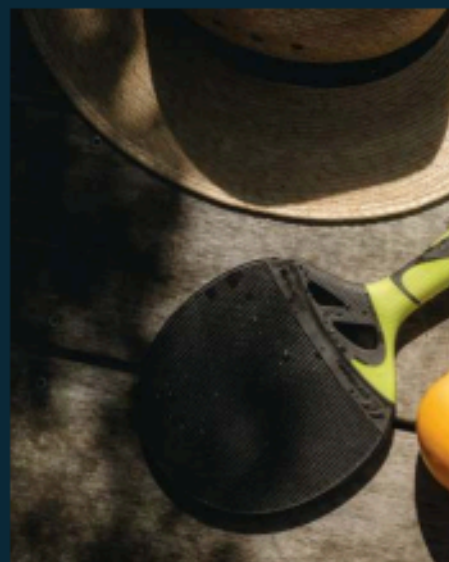
US: [us.cornilleau.com](https://us.cornilleau.com)



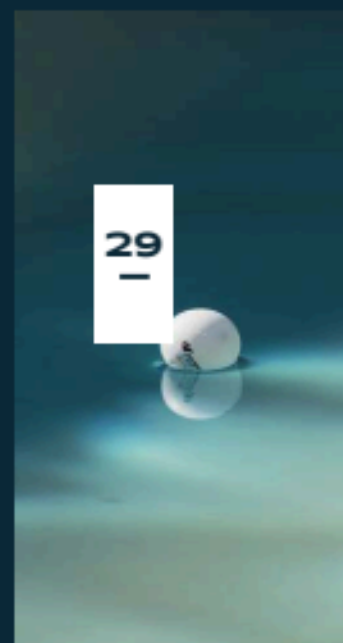


Our French customer service team respond to inquiries in French, English or German and is available from Monday to Friday, 8am to 12pm and 1.30pm to 5.30pm. UK customer service from Monday to Friday, 9am to 5pm. US customer service based in N.Y. from Monday to Friday, 9am to 6pm. We also respond to inquiries submitted via the form on our website.



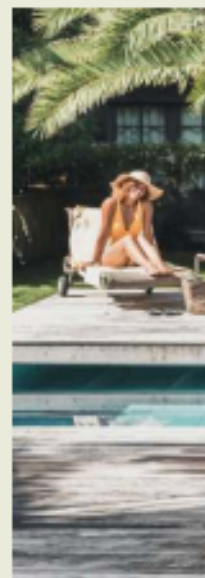


# Passionate about ping-pong

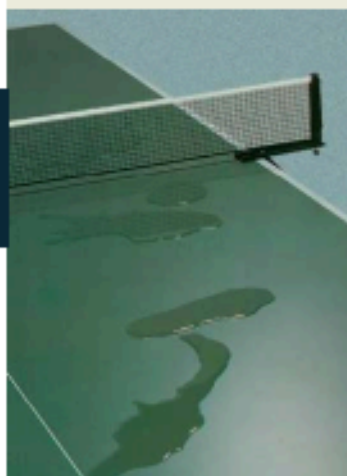


# Cornilleau and the evolution of outdoor ping-pong

---



30  
|



1988

The first outdoor  
ping-pong table:  
the "Tropicale"

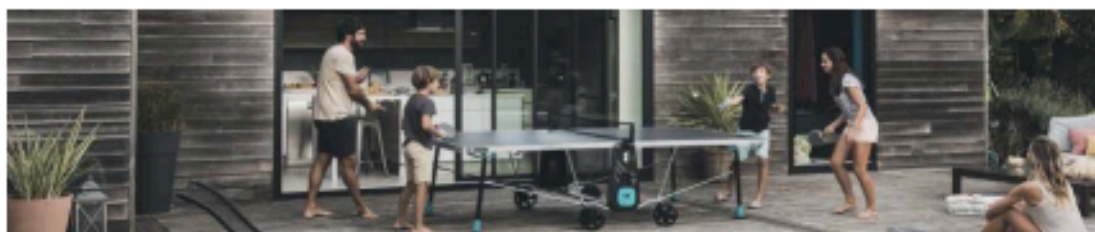


**Cornilleau**  
UN REBOND D'AVANCE



Recreational ping-pong experienced a major revolution in the 1980s. Pierre Cornilleau, who was running the company at the time, wanted to transform ping-pong, traditionally an indoor game, to be enjoyed outdoors. Meanwhile, society's focus on leisure activities was growing, as was the number of people living in their own homes. Against this backdrop, and pioneering the use of new, more resistant materials, Cornilleau brought out the first ping-pong table specifically designed for outdoor use in 1988. The move to solid resin laminate playing surfaces and a composite aluminium structure made the brand's ambition a reality. Today, more people than ever before enjoy playing ping-pong, but the demands of the outdoor environment and the expansion of ping-pong to

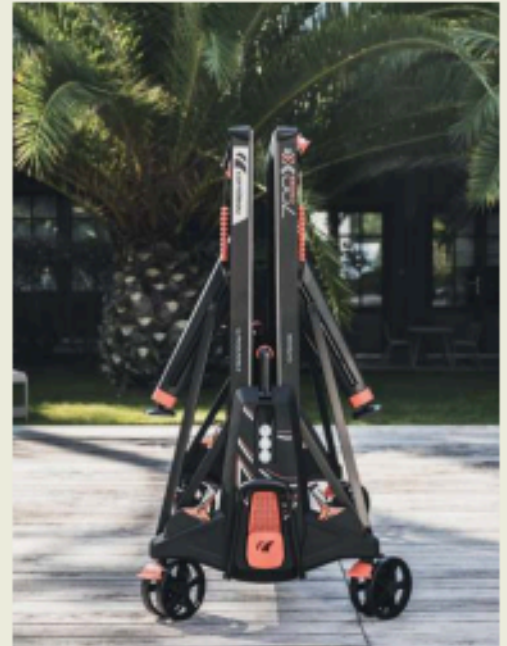
include all kinds of players mean that the game has to evolve. Cornilleau is constantly working to make its tables stand out from the crowd: making them stronger, safer and easier to move and store, while still delivering game quality designed to satisfy even the most demanding players. Outdoor tables are even more hard-wearing, to withstand both the weather and the test of time. They can be used with complete confidence, without worrying about any damage being caused by rackets or anything else. With a 10-year warranty, they often last far longer and are passed down from one generation to the next. The availability of spare parts for at least 20 years after the original purchase is further reassurance that you will be enjoying your table for many years to come.



# Take your table for a spin

---

32  
—



## Any terrain

All our outdoor tables are equipped with heavy-duty oversized articulated twin wheels, for effortless manoeuvrability across uneven terrain. They are so easy to move, portable and versatile, all you need to do is choose your playground.

## Space-saving design

Cornilleau tables use the patented Compact Technology system to take up as little space as possible when folded away, while still being easy to move around and extremely safe.



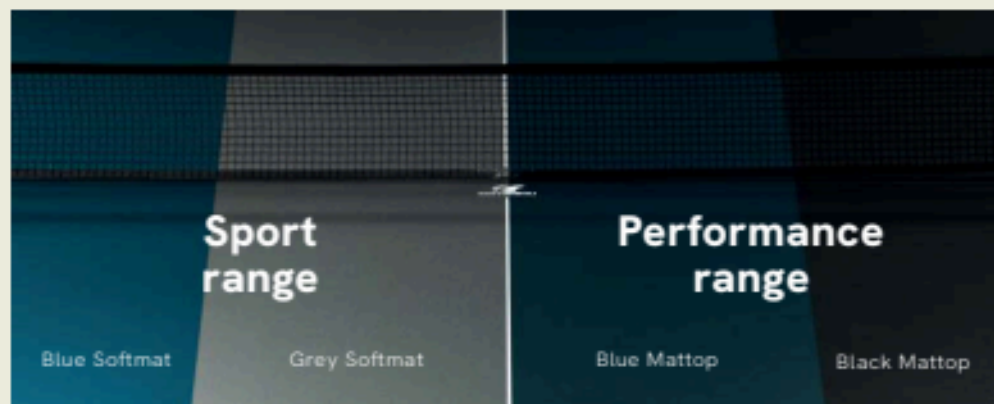
## Safe and sound

Cornilleau folding ping-pong tables have either 8 or 16 locking points, depending on the model. The tables with 8 locking points are fitted with the Push'n Lock system, which complies with current safety standards. The models with 16 locking points incorporate DSI (Double Integrated Security) technology, offering unbeatable safety and a user-friendly design, with a single central release handle for folding and unfolding the table.

# Accessories and finishes: customize your table

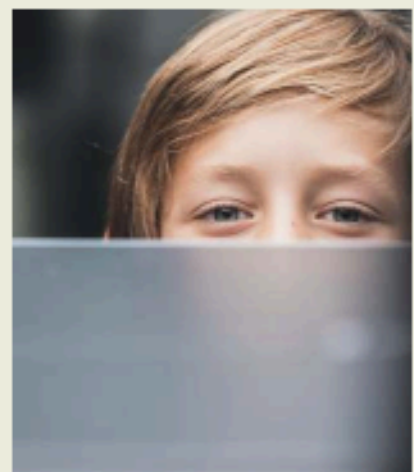
---

34  
—



## Matt finish tops for reduced glare

Cornilleau table surfaces are designed to deliver the best possible playing experience. The Softmat and Mattop finishes both dampen glare from the sun to stop players being dazzled. These finishes reduce glare by 3 and 10 times respectively. Tables in the Sport range feature the Softmat finish, while tables in the Performance range and community tables have the Mattop finish.



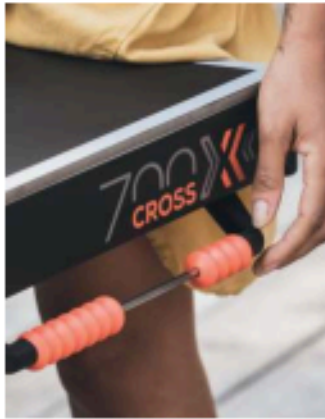
## Exclusive features



LEGS THAT ADAPT TO ANY KIND OF SURFACE



STOW-AWAY CUP HOLDER



FOLD-DOWN SCORE COUNTERS



SIDE STORAGE POCKETS





36  
—

# Ping-pong tables

37  
—





## More than just ping-pong

---

Whatever way you play it - as a sport, a hobby or just a bit of fun - ping-pong is all about getting together, having a good time and enjoying yourself. Come rain or shine, on your own, in pairs or bigger groups: do it your own way and enjoy it to the fullest. Ping-pong offers an unparalleled sense of freedom and inclusivity - anyone can play. The tables in the Sport range reflect this attitude, which lies at the heart of the game. Their exceptional quality, durability and weather resistance, combined with the safety features and playing experience they offer, mean that everybody can join in the fun of ping-pong and not worry about a thing.

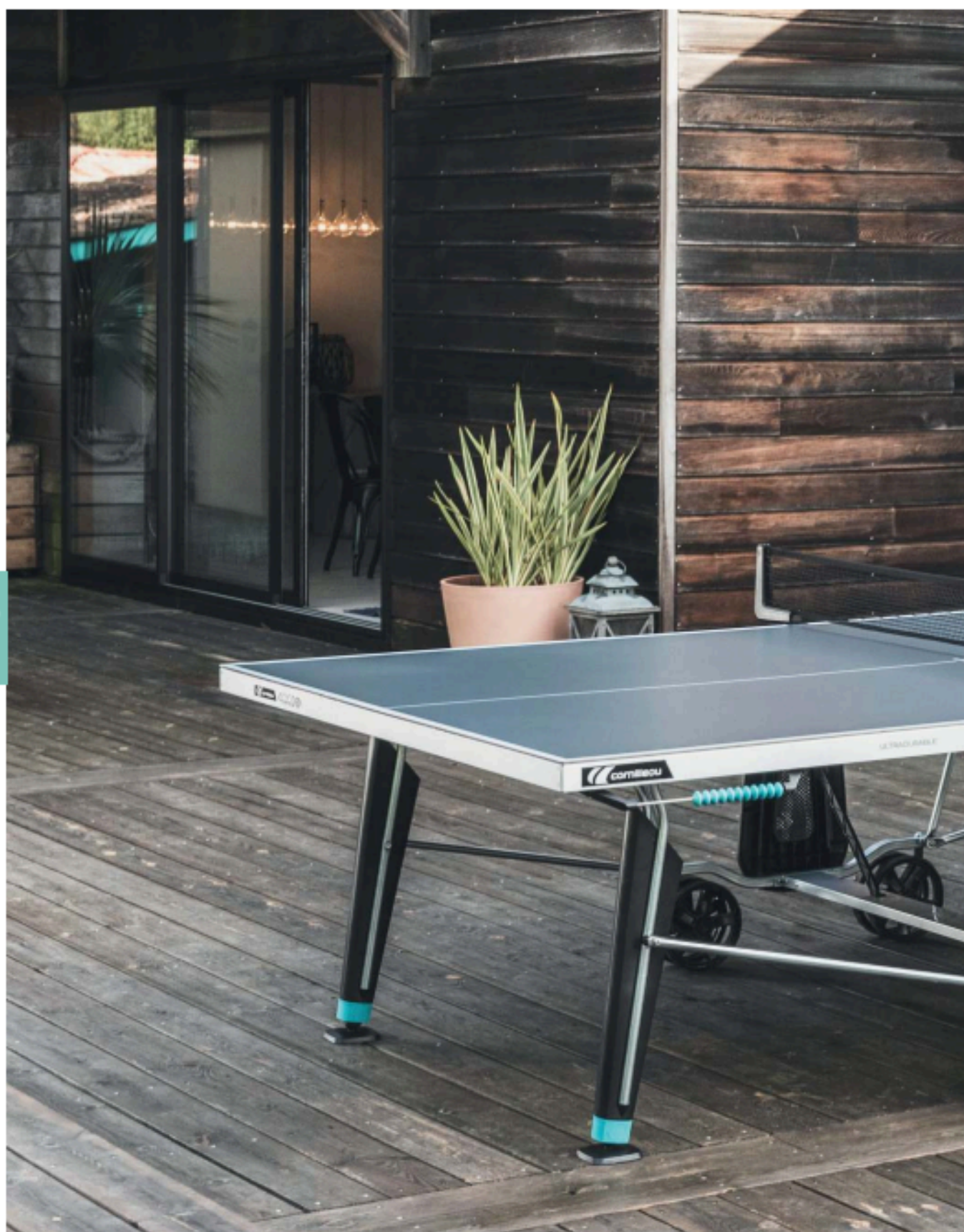
L e i s u r e  
S p o r t  
o u t d o o r  
t a b l e s

39  
—



# Leisure Sport outdoor tables

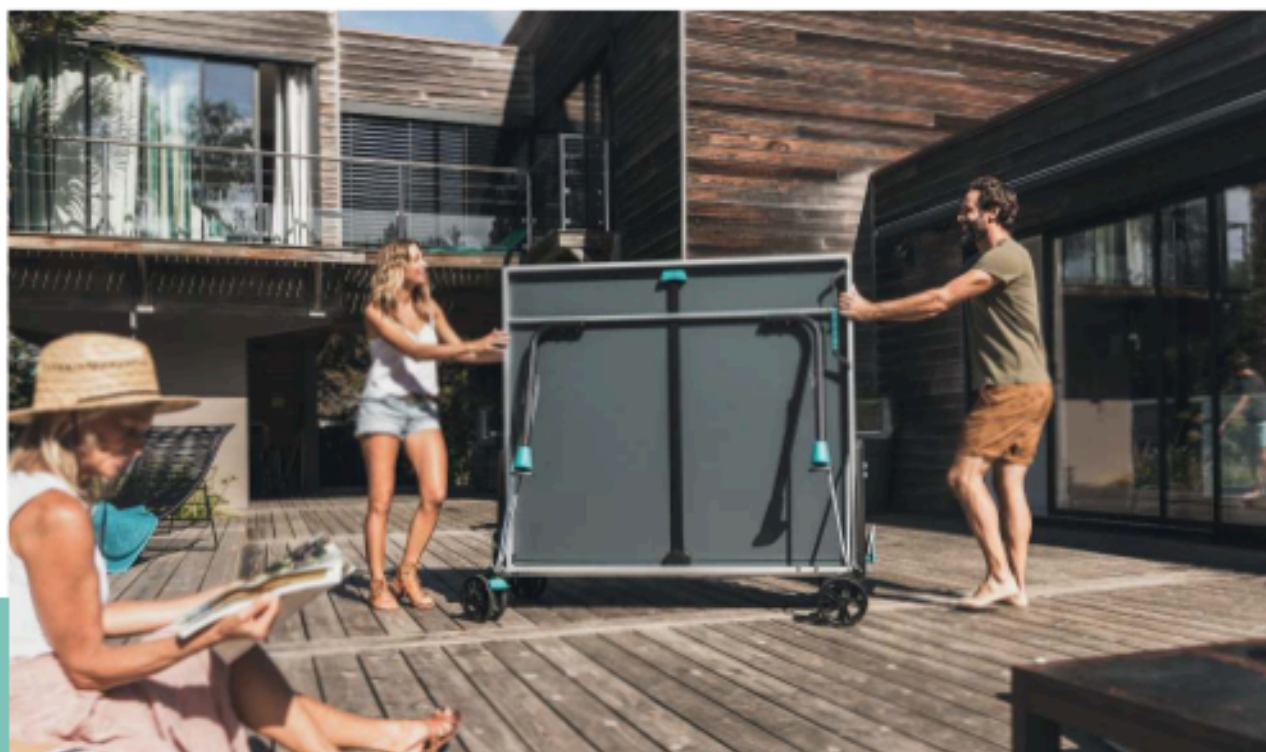
40  
—





# Leisure Sport outdoor tables

42  
—





43  
—



# Leisure Sport outdoor tables

## 100X

Table tennis for all

RESIN LAMINATE  
PLAYING SURFACE  
ALU-ZINC  
FRAME

4mm

▲ 1.5"

▼ 40mm



GREY BLUE



SHOCK & WEATHER  
ULTRA RESISTANT

MADE IN  
FRANCE

FIXED NET  
WITH ADJUSTABLE TENSION

SOFTMAT FINISH  
reduces sun glare  
by 3 times



44

## 300X

Steady on its feet

RESIN LAMINATE  
PLAYING SURFACE  
ALU-ZINC  
FRAME

5mm

▲ 2"

▼ 50mm



GREY BLUE



SHOCK & WEATHER  
ULTRA RESISTANT

MADE IN  
FRANCE

FOLDING NET  
WITH ADJUSTABLE TENSION

SOFTMAT FINISH  
reduces sun glare  
by 3 times





WARRANTY  
OUTDOOR  
TABLES



SPARE PARTS  
AVAILABILITY

# 200X

Simple yet reliable

RESIN LAMINATE  
PLAYING SURFACE

5mm

ALU-ZINC  
FRAME

▲ 15°  
▼ 40mm



GREY BLUE



SHOCK & WEATHER  
ULTRA RESISTANT



MADE IN  
FRANCE

FIXED NET  
WITH ADJUSTABLE TENSION

SOFTMAT FINISH  
reduces sun glare  
by 3 times

LOCKING &  
UNLOCKING SYSTEM  
8 points - decentralised

RACKETS AND BALLS  
STORAGE  
(1 racket and 2 balls on each side)

DOUBLE WHEELS  
200mm (8")  
+ BRAKES X2

ADJUSTING FEET  
FROM -1CM TO +9CM (-0.4" TO +2")  
+ ARTICULATED FEET



45

# 400X

Sturdy and agile

RESIN LAMINATE  
PLAYING SURFACE

5mm

ALU-ZINC  
FRAME

▲ 2°  
▼ 50mm



GREY BLUE



SHOCK & WEATHER  
ULTRA RESISTANT



MADE IN  
FRANCE

FOLDING NET  
WITH ADJUSTABLE TENSION

SOFTMAT FINISH  
reduces sun glare  
by 3 times

SCORER  
COUNTERS x2  
retractable

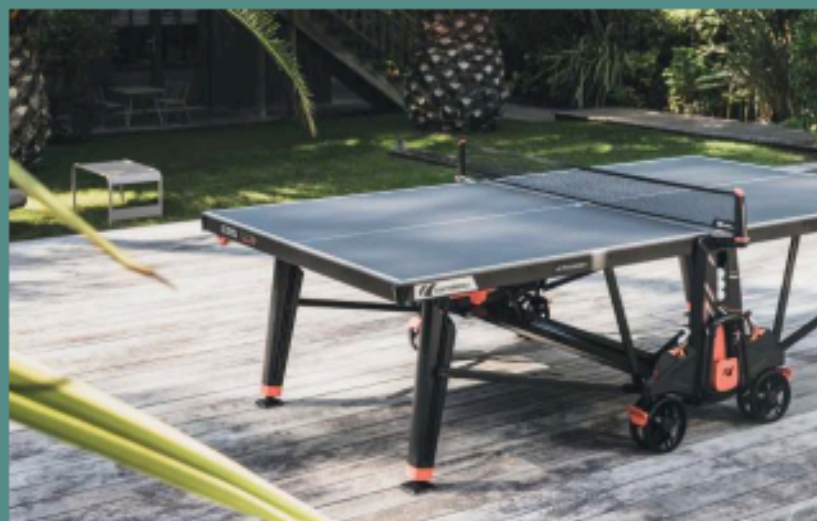
LOCKING &  
UNLOCKING SYSTEM  
16 points - centralised

RACKETS AND BALLS  
STORAGE  
(2 rackets and 3 balls on each side)

DOUBLE WHEELS  
200mm (8")  
+ BRAKES X2

ADJUSTING FEET  
FROM -1CM TO +9CM (-0.4" TO +2")  
+ ARTICULATED FEET





# Play knows no limits

---

Playing gives us a fantastic sense of freedom, it's an opportunity to break away from our usual routines, to relax and see other people in a different light. If you're looking for a challenge and plenty of fun with a competitive edge, you need a ping-pong table you can rely on. The design, high quality materials, attention to detail and exceptional features of the tables in the Performance range exceed all expectations, offering a unique gaming experience with no barriers or limits.

L e i s u r e  
P e r f o r m a n c e  
o u t d o o r  
t a b l e s



47  
—

## Leisure Performance outdoor tables

50  
|



# Leisure Performance outdoor tables

## 500X

Playing in style

RESIN LAMINATE  
PLAYING SURFACE

ALU-ZINC  
FRAME

6mm

▲ 2"  
▼ 50mm



BLACK BLUE



SHOCK & WEATHER  
ULTRA RESISTANT

MADE IN  
FRANCE

RETRACTABLE NET  
WITH ADJUSTABLE HEIGHT  
AND TENSION

CORNER  
PROTECTION PADS

ADJUSTING FEET  
FROM -1CM TO +5CM (-0,4" TO +2")  
+ARTICULATED FEET



MATTOP FINISH  
reduces sun glare  
by 10 times

SCORER  
COUNTERS x2  
retractable

LOCKING &  
UNLOCKING SYSTEM  
16 points - centralised

RACKETS AND BALLS  
STORAGE  
(2 rackets and 3 balls on each side)

STORAGE  
COMPARTMENTS  
bottle holder  
(1 on each side)

DOUBLE WHEELS  
200mm (8")  
+ BRAKES X2

52

## 700X

Top of the class

RESIN LAMINATE  
PLAYING SURFACE

ALU-ZINC  
FRAME

8mm

▲ 2,5"  
▼ 60mm



BLACK



SHOCK & WEATHER  
ULTRA RESISTANT

MADE IN  
FRANCE

RETRACTABLE NET  
WITH ADJUSTABLE HEIGHT  
AND TENSION

CORNER  
PROTECTION PADS

BALL  
DISPENSERS X2  
(5 balls)

ADJUSTING FEET  
FROM -1CM TO +5CM (-0,4" TO +2")  
+ARTICULATED FEET



MATTOP FINISH  
reduces sun glare  
by 10 times

SCORER COUNTERS  
x2 - retractable

CUP-HOLDERS x2  
retractable

LOCKING &  
UNLOCKING SYSTEM  
16 points - centralised

RACKETS AND BALLS  
STORAGE  
(2 rackets and 3 balls on each side)

STORAGE  
COMPARTMENTS  
bottle holder  
(1 on each side)

CARRY-OVER HANDLE  
EASYTRACK

DOUBLE WHEELS  
200mm (8")  
+ BRAKES X4  
+ HUBCAPS X4



WARRANTY  
OUTDOOR  
TABLES



SPARE PARTS  
AVAILABILITY

# 600X

Aiming for perfection

RESIN LAMINATE  
PLAYING SURFACE  
ALU-ZINC  
FRAME

7mm  
± 25"  
± 60mm



BLACK BLUE



SHOCK & WEATHER  
ULTRA RESISTANT



MADE IN  
FRANCE

RETRACTABLE NET  
WITH ADJUSTABLE HEIGHT  
AND TENSION

CORNER  
PROTECTION PADS

BALL  
DISPENSERS x2  
(5 balls)

ADJUSTING FEET  
FROM -10CM TO +5CM (-4" TO +2")  
• ARTICULATED FEET

MATTOP FINISH  
reduces sun glare  
by 10 times

SCORER  
COUNTERS x2  
retractable

CUP-HOLDERS x2  
retractable

LOCKING &  
UNLOCKING SYSTEM  
16 points - centralised

RACKETS AND BALLS  
STORAGE  
(2 rackets and 3 balls on each side)

STORAGE  
COMPARTMENTS  
bottle holder  
(1 on each side)

CARRY-OVER HANDLE  
EASYTRACK

DOUBLE WHEELS  
200mm (8")  
+ BRAKES x2





## The perfect playing surface for indoor players

---

The bounce, the spin and even the sound it makes when the ball hits it: the chipboard used to make Cornilleau indoor tables is second to none and particularly popular with purists. Widely recognised as being excellent value for money, it's a firm favourite with many players. Having revamped this range in 2022, this year Cornilleau has designed two new models to meet the needs of different types of players better than ever.

l e i s u r e  
i n d o o r  
t a b l e s

55  
—

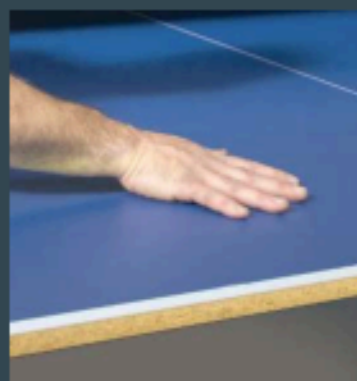


## Leisure Indoor tables



## Love your table!

Your indoor table will thank you for some TLC. You should never use it outdoors, prevent any spills on the playing surface, and always keep it dry, out of direct sunlight and away from excessive heat. You should also avoid hitting it with rackets or any other objects, to prevent damage that could compromise your playing experience as well as the appearance of your table.



57



# New range

58

NEW

## Challenger INDOOR

Ping-pong for everyone

CHEFBOARD  
PLAYING SURFACE  
ALU-ZINC  
FRAME

16mm

▲ 1°  
▼ 30mm



BLUE



MADE IN  
FRANCE

FIXED NET  
WITH ADJUSTABLE TENSION

LOCKING &  
UNLOCKING SYSTEM  
8 points - decentralised

ROUNDED END CAP  
Protects your floor

DOUBLE WHEELS  
MONOBLOC NOTCHED  
150MM (Ø)





WARRANTY  
INDOOR  
TABLES



SPARE PARTS  
AVAILABILITY

# 100 INDOOR

CHIPBOARD  
PLAYING SURFACE  
ALU-ZINC  
FRAME

18mm

▲ 1,4"  
▼ 25mm



BLUE



MADE IN  
FRANCE

Perfect for beginners

FIXED NET  
WITH ADJUSTABLE TENSION

LOCKING &  
UNLOCKING SYSTEM  
8 points - decentralised

BALLS STORAGE  
(2 balls on each side)

ADJUSTING FEET  
FROM -1CM TO +5CM (-0,4" TO +2")

DOUBLE WHEELS  
MONOBLOC NOTCHED  
150MM (6")

NEW DESIGN

# 300 INDOOR

CHIPBOARD  
PLAYING SURFACE  
ALU-ZINC  
FRAME

18mm

▲ 1,6"  
▼ 40mm



BLUE



MADE IN  
FRANCE

The club and leisure table

FOLDING NET  
WITH ADJUSTABLE TENSION

LOCKING &  
UNLOCKING SYSTEM  
16 points - centralised

BALLS STORAGE  
(2 balls on each side)

ADJUSTING FEET  
FROM -1CM TO +5CM (-0,4" TO +2")  
+ ARTICULATED FEET

DOUBLE WHEELS  
MONOBLOC NOTCHED  
150MM (6")  
+ BRAKES X2

# Leisure Indoor tables

NEW

## 400 INDOOR

Performance in the palm  
of your hand

CHIPBOARD  
PLAYING SURFACE  
ALU-ZINC  
FRAME

22mm

▲ 2"  
▼ 50mm



BLUE



MADE IN  
FRANCE

FOLDING NET  
WITH ADJUSTABLE TENSION

CORNER  
PROTECTION PADS

ADJUSTING FEET  
FROM -1CM TO +5CM (-0,4" TO +2")  
+ARTICULATED FEET

LOCKING &  
UNLOCKING SYSTEM  
16 points - centralised

BALLS STORAGE  
(2 balls on each side)

SOLID RUBBER TYRE  
DOUBLE WHEELS  
SPECIAL INDOOR  
150MM (6")  
+ BRAKES X2

60  
—

## 500 INDOOR

The club and leisure table

CHIPBOARD  
PLAYING SURFACE  
ALU-ZINC  
FRAME

22mm

▲ 2"  
▼ 50mm



GREY BLUE



MADE IN  
FRANCE

RETRACTABLE NET  
WITH ADJUSTABLE HEIGHT  
AND TENSION

CORNER  
PROTECTION PADS

ADJUSTING FEET  
FROM -1CM TO +5CM (-0,4" TO +2")  
+ARTICULATED FEET

LOCKING &  
UNLOCKING SYSTEM  
16 points - centralised

BALLS STORAGE  
(2 balls on each side)

STORAGE  
COMPARTMENTS  
bottle holder  
(1 on each side)

SOLID RUBBER TYRE  
DOUBLE WHEELS  
SPECIAL INDOOR  
150MM (6")  
+ BRAKES X2



## Ping-pong open to everyone

---

Anyone can play ping-pong, anywhere, any time. Community tables are there for everyone to enjoy. While the quality of play they offer means that players of all abilities can enjoy the game, their stand-out feature is their unbeatable durability. Designed for intensive use, they are also designed to withstand vandalism. 2025 will see the community range updated with a new table, the Urban, and innovative designs, primarily to improve ergonomics for wheelchair users.



# Institutional o u t d o o r t a b l e s

63  
—



## Institutional outdoor tables

64  
—





10 YEARS  
WARRANTY  
OUTDOOR  
TABLES



20 YEARS  
SPARE PARTS  
AVAILABILITY



65  
—

# Institutional outdoor tables

NEW DESIGN

## PARK OUTDOOR

The indestructible ping-pong table

RESIN LAMINATE  
PLAYING SURFACES  
ALU-ZINC  
FRAME

9mm



▲ 2,75"  
▼ 70mm

GREY



PRM  
APPROVED



SHOCK & WEATHER  
ULTRA RESISTANT



MADE IN  
FRANCE

GALVANISED STEEL NET  
STANDARD NET IN OPTION

INTEGRATED ROUNDED  
CORNERS



MATTOP FINISH  
reduces sun glare by 10 times

EXCELLENT  
PLAYING  
PERFORMANCE  
competition bounce

Complies with the European standard  
for sports facilities  
open access : EN 15312



SIMPLE SET-UP  
assembly 30 minutes  
with 2 people



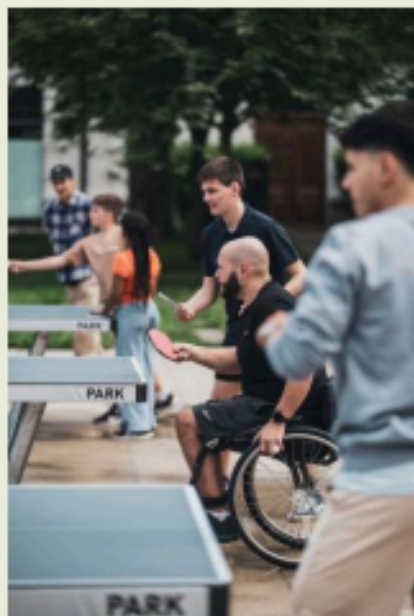
EXTREMELY ROBUST  
Support loads  
up to 1,600 kg (3527lb)



3 GROUND FASTENING  
METHODS POSSIBLE :

- Bolt to the ground - included
- Ballast kit (170kg / 375lb) - optional
- Anchoring into the ground - optional

72  
—



**10 YEARS**  
WARRANTY  
OUTDOOR  
TABLES

**20 YEARS**  
SPARE PARTS  
AVAILABILITY



# Institutional outdoor tables

NEW

## URBAN OUTDOOR

The pin-pong table  
built to last

RESIN LAMINATE  
PLAYING SURFACES  
ALU-ZINC  
FRAME

7mm

▲ 2.75"  
▼ 70mm

GREY



PRM  
APPROVED



SHOCK & WEATHER  
ULTRA RESISTANT



MADE IN  
FRANCE

GALVANISED STEEL NET

INTEGRATED  
ROUNDED  
CORNERS



MAT TOP FINISH  
reduces sun glare by 10 times

EXCELLENT PLAYING  
PERFORMANCE  
competition bounce

Complies with the European standard  
for sports facilities  
open access : EN 15312



SIMPLE SET-UP  
assembly 30 minutes  
with 2 people



VERY ROBUST  
Support loads  
up to 1,200 kg (2645lbs)



FLOOR FIXING  
Bolt to the ground - included

74



# Institutional outdoor tables

NEW DESIGN

## CAMPUS OUTDOOR

The open access ping-pong table

RESIN LAMINATE  
PLAYING SURFACES  
ALU-ZINC  
FRAME

7mm

▲ 2.5" ▼ 60mm



GREY BLUE



SHOCK & WEATHER  
ULTRA RESISTANT



MADE IN  
FRANCE

GALVANISED STEEL NET  
STANDARD NET IN OPTION

INTEGRATED ROUNDED  
CORNERS

BALL  
DISPENSERS X2  
(5 balls on each)

MATTOP FINISH  
reduces sun glare by 10 times

RACKETS  
STORAGE  
(2 rackets on each side)



FLOOR FIXING  
Bolt to the ground - included



ROBUST  
Support loads  
up to 800 kg (1764lbs)

Complies with the European standard  
for sports facilities  
open access : EN 15312

76

## 540 OUTDOOR

Strong  
but portable

RESIN LAMINATE  
PLAYING SURFACES  
ALU-ZINC  
FRAME

7mm

▲ 2.5" ▼ 60mm



GREY



SHOCK & WEATHER  
ULTRA RESISTANT



MADE IN  
FRANCE

GALVANISED STEEL NET  
STANDARD NET IN OPTION

CORNER  
PROTECTION PADS

ADJUSTING FEET  
FROM -1CM TO +5CM (-0,4" TO +2")  
+ARTICULATED FEET

MATTOP FINISH  
reduces sun glare by 10 times

LOCKING &  
UNLOCKING SYSTEM  
16 points - centralised

ULTRADURABLE  
STRUCTURE  
& STEEL SIDES

Complies with the European standard  
for sports facilities  
open access : EN 15312

DOUBLE WHEELS  
200mm (8")  
+ BRAKES X2

10 YEARS  
WARRANTY  
OUTDOOR  
TABLES

20 YEARS  
SPARE PARTS  
AVAILABILITY

# 740 LONGLIFE

Built to last

RESIN LAMINATE  
PLAYING SURFACES  
9mm  
ALU-ZINC  
FRAME  
GREY



PERMANENT & RETRACTABLE NET  
WITH ADJUSTABLE HEIGHT  
AND TENSION

MATTOP FINISH  
reduces sun glare by 10 times

EXCELLENT PLAYING  
PERFORMANCE  
competition bounce

LOCKING &  
UNLOCKING SYSTEM  
16 points - centralised

ADJUSTING FEET  
FROM -1CM TO +5CM (-0.4" TO +2")

SPECIAL INDOOR  
BALL BEARING WHEELS 125MM (5")  
+ BRAKES X4



77

# Rackets Balls Accessories

97  
—



O u t d o o r  
r a c k e t s

99  
—



## Outdoor rackets



Warranty



Eco-designed  
racket



MADE IN  
FRANCE



102

# Softbat

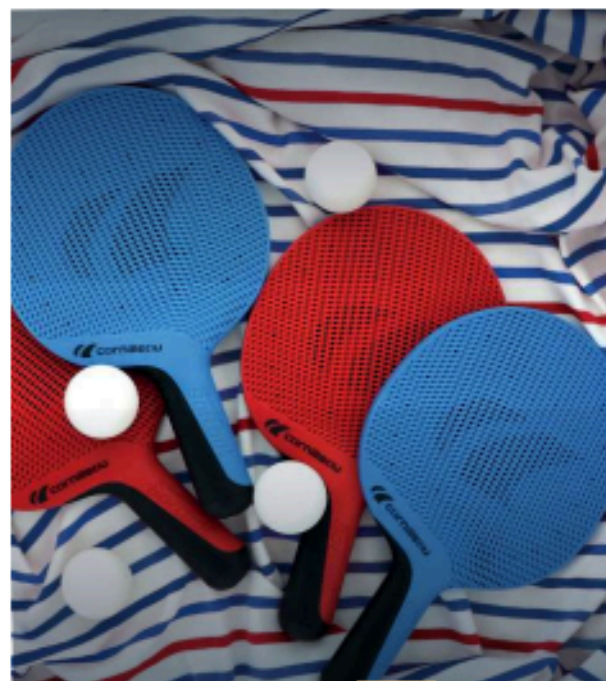
## Durable and sustainable

The SOFTBAT is made by recycling and recovering cotton and polyester textiles from discontinued ARMOR LUX collections and used clothing collected from its customers. SOFTBAT is the world's first outdoor racket designed to be eco-friendly, but there's more to it than that. It is ultra-durable and suitable for intensive use, both at home and in schools. Its ergonomics are perfect for beginners, helping them to position their hands and fingers correctly.

Available in a **DUO PACK**  
- set of 2 rackets.

**QUATTRO PACK** - set of  
4 rackets and 4 balls.

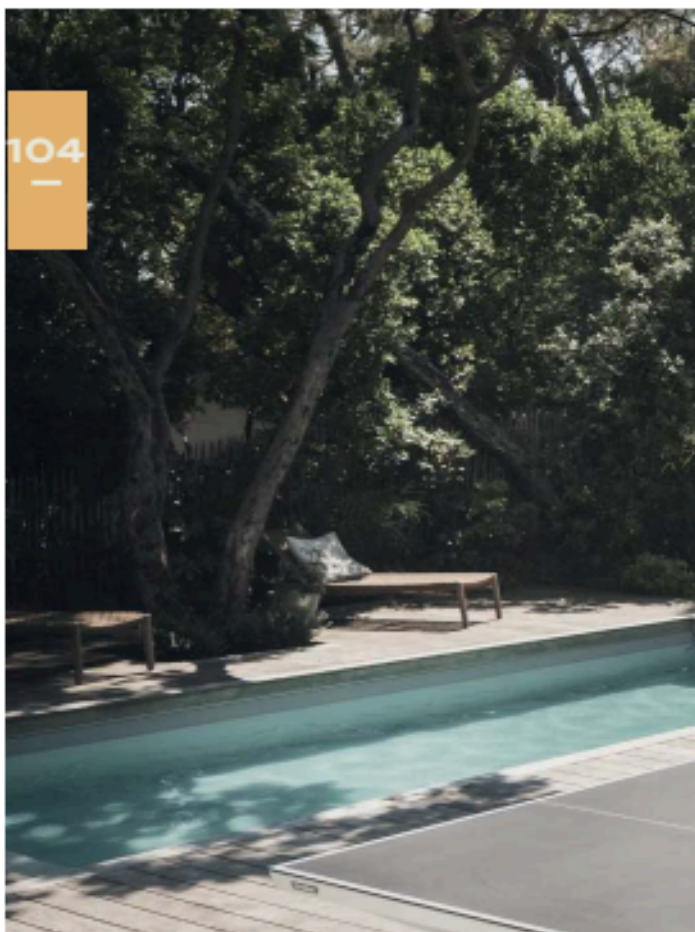
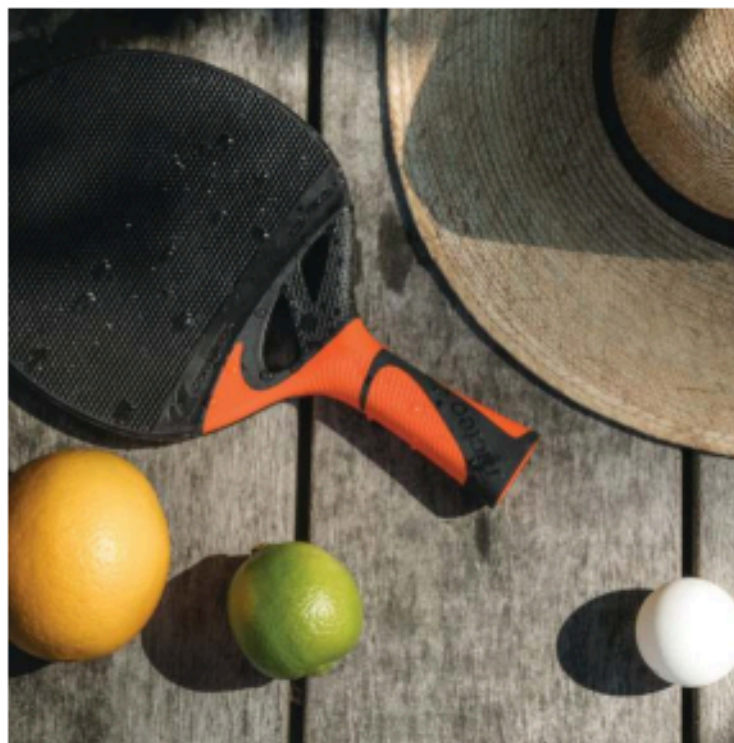
And as a **SOFTBAT  
SCHOOL** pack - set of  
10 rackets for groups. More  
details on page 130.



103



## Outdoor rackets



# Tacteo



Warranty



MADE IN  
FRANCE

## Control and playability

Tacteo rackets combine grip and control with an elastomer coating and patented surface structure. These versatile rackets are suitable for players of all abilities. Impact resistant and weatherproof, they're a durable choice for playing with friends and family, while their vibrant design adds a fresh pop of colour to your game.



Available in a **DUO PACK**  
including 2 rackets and 3 balls.  
More details on page 130.



**TACTEO SCHOOL**  
pack of 10 rackets for groups.  
More details on page 130.

105  
—



## Outdoor rackets



106  
—

# Nexeo

---



### Turbocharge your game

The Nexeo racket is all about performance and durability. Its speed, precision and rotation are unrivalled by any other outdoor racket and reflect the painstaking work carried out by Cornilleau engineers and our rigorous testing process. The exclusive surface and ergonomic design make it the perfect partner for serious players. Strength and durability combine for unlimited playing pleasure. It is available in three versions: the original X70, the X90 which boasts carbon in the blade for faster play and the graphite X200, which is ultra lightweight and delivers an explosive performance.



### **X70**

Next-generation  
composite racket



### **X90**

Next-generation  
carbon composite  
racket



### **X200**

Next-generation graphite  
composite racket, lightweight  
and explosive



## Performance is the name of the game

---

Sport, Perform and Excell: Cornilleau has devised three ranges of high-performance rackets for indoor play. From casual gameplay to high-intensity matches, all these rackets feature ITTF-approved rubbers. Because all players deserve the same level of enjoyment and confidence in their racket, whatever their ability.

I n d o o r  
r a c k e t s



109  
—

SIMON GAUZY

# Bringing technology into play

---

110



#### ITTF CERTIFIED RUBBERS

All our indoor racket rubbers have undergone the necessary tests and inspections to ensure quality, safety and compliance with ITTF (International Table Tennis Federation) standards.



#### AERO - AERO SOFT

Aero and Aero Soft technologies allow the vibrations generated by the impact of the ball to be transmitted to the handle as efficiently as possible. Sensory receptors in the hand respond immediately with all the information needed for a perfect shot!



#### DYNACELL

The key to a foam's elastic response in terms of achieving peak energy restitution lies in optimizing the material's composition/structure balance. That key now has a name: Dynacell.



#### OPTI FEEL CONCEPT

The wood fiber in each layer are arranged at right angles to each other, for extra stability. The Opti feel concept maximizes feedback and delivers immediate gains in control and accuracy.



#### EFFICIENT CURVE

Made of 90% natural rubber, the compact Efficient Curve provides unrivalled grip on the fastest rubbers.



#### CARBON TECHNOLOGY

The 100% carbon insert where the handle meets the blade adds extra rigidity for more powerful play.



111  
—

## Indoor rackets



### SPORT 100 \*

Sponge: 1,5mm  
Handle: flared  
Blade: 5 plywood  
Rubber: 1 star



### SPORT 200 \*\*

Sponge: 1,8mm  
Handle: flared  
Blade: 5 plywood  
Rubber: 2 stars



112  
—

## Sport

### Suitable for everyone

Perfect for beginners, the Sport range of indoor rackets is ideal for casual players and those just starting their ping-pong journey. Get to grips with basic gameplay with one of these rackets.

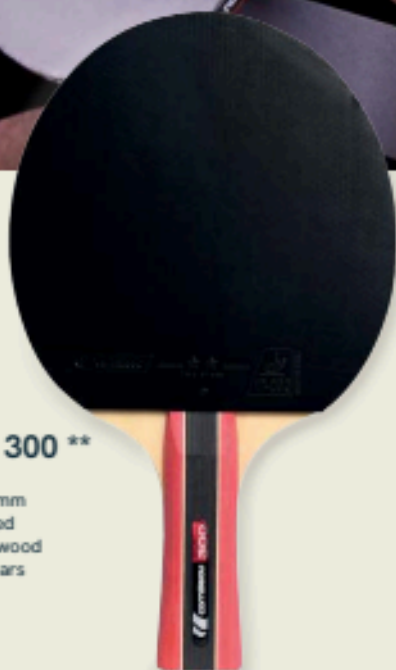


### SPORT PACK SOLO \*\*

Sponge: 1,8mm  
Handle: flared  
Blade: 5 plywood  
Rubber: 2 stars

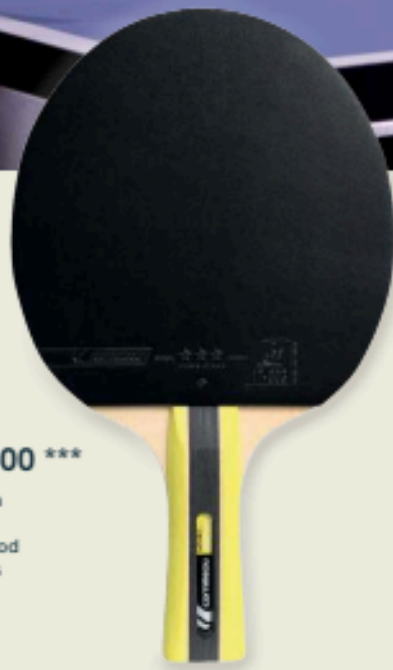
1 racket + 1 racket cover





**SPORT 300 \*\***

Sponge: 1,8mm  
 Handle: flared  
 Blade: 5 plywood  
 Rubber: 2 stars



**SPORT 400 \*\*\***

Sponge: 1,8mm  
 Handle: flared  
 Blade: 5 plywood  
 Rubber: 3 stars



113



**SPORT PACK DUO \*\***

Sponge: 1,5mm  
 Handle: flared  
 Blade: 5 plywood  
 Rubber: 2 stars

**2 rackets + 3 balls**



**SPORT PACK QUATTRO \***

Sponge: 1,5mm  
 Handle: flared  
 Blade: 5 plywood  
 Rubber: 1 star

**4 rackets + 4 balls**



# Perform

---

## Versatile and consistent

The Perform range of indoor rackets offers an excellent compromise between energy output and stability. They are easy to use and suited to a wide range of player profiles.

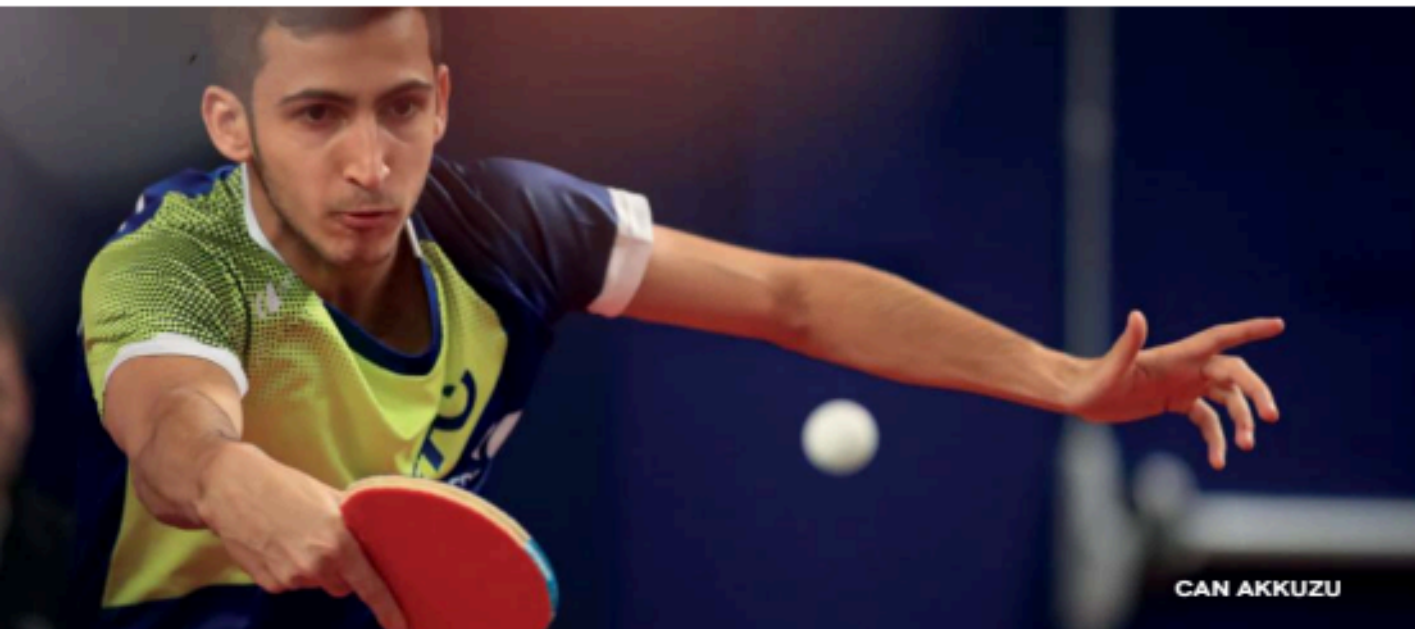
114  
—



### PERFORM 500 \*\*\*

Sponge: 1,8mm  
Handle: flared  
Blade: 5 plywood  
Rubber: 3 stars





CAN AKKUZU



**PERFORM  
600** \*\*\*\*

Sponge: 1,8mm  
Handle: flared  
Blade: 5 plywood  
Rubber: 4 stars



**PERFORM  
800** \*\*\*\*\*

Sponge: 1,8mm  
Handle: flared  
Blade: 5 plywood  
Rubber: 5 stars



115  
—

Indoor  
rackets

## Excell

---

### Controlled power

With more spin, more speed and more sensitivity, the Excell range of rackets is aimed at the most demanding players looking for top performance, making them perfect for competitive use.

116  
—



### EXCELL 1000 ★★★★★

Sponge: 2.0mm  
Handle: flared  
Blade: 5 plywood  
Rubber: 6 stars





**EXCELL CARBON  
2000 \*\*\*\*\***

Sponge: 2.0mm  
Handle: flared  
Blade: 5 plywood  
Rubber: 6 stars



**EXCELL CARBON  
3000 \*\*\*\*\***

Sponge: 2.2mm  
Handle: flared  
Blade: 5 plywood  
Rubber: 6 stars



## Balls & accessories



# Balls

118



### P-BALL\* ABS EVOLUTION

Plastic balls 1".  
Pack of 6 training balls.  
White.

### P-BALL\* ABS EVOLUTION X72

Plastic balls 1".  
White or orange.



### P-BALL\*\*\* ABS EVOLUTION

Plastic balls 3\*\*\*,  
Approved by ITTF.  
Pack of 3 competition balls.  
White.



### P-BALL\*\* ABS EVOLUTION

Plastic balls 2".  
Pack of 6 training balls  
White.



### P-BALL OUTDOOR

ULTRADURABLE plastic balls  
windproof, heavier and more solid,  
they retain a good playability.  
Pack of 6 outdoor balls.  
White.



# Table covers

---

Protect your table from dust, dirt and bad weather. These protective covers fasten securely in place for peace of mind when children are around.

H 140cm x L 158cm x l 85cm (lower part) and 25cm (upper part)



**PREMIUM +**  
Polyester cover.  
Black

## SPORT

Polyethylene cover.  
Blue or grey.



# LEISURE TABLE RANGE

## Sport outdoor



	100X	200X	300X	400X
<b>Use</b>	OUTDOOR	OUTDOOR	OUTDOOR	OUTDOOR
<b>References</b>	115100 ■ 115300 ■	115101 ■ 115301 ■	115102 ■ 115302 ■	115103 ■ 115303 ■
<b>Playing surface</b>	Resin laminate 4mm	Resin laminate 5mm	Resin laminate 5mm	Resin laminate 5mm
<b>Coating</b>	SOFTMAT	SOFTMAT	SOFTMAT	SOFTMAT
<b>Frame height</b>	40mm (1,5") / Alu-zinc	40mm (1,5") / Alu-zinc	50mm (2") / Alu-zinc painted black	50mm (2") / Alu-zinc
<b>Locking system</b>	Push'n Lock (8 points)	Push'n Lock (8 points)	DSi (16 points)	DSi (16 points)
<b>Compact Technology</b>	yes	yes	yes	yes
<b>Leg type / dimensions</b>	Straight / diam. 25mm (1")	Straight / diam. 38mm (1,5")	Straight / diam. 38mm (1,5") painted black	Tapered / 110-65 - 65mm (4-3" - 3")
<b>Adjustable leg pad</b>	1D adjustable diam. 50mm (2")	3D adjustable diam. 104mm (4")	3D adjustable diam. 104mm (4")	3D adjustable diam. 104mm (4")
<b>Net type</b>	Fixed	Fixed	Folding	Folding
<b>Adjustable net</b>	Tension	Tension	Tension	Tension
<b>Wheel type</b>	Special outdoor double wheels	Special outdoor double wheels	Special outdoor double wheels	Special outdoor double wheels
<b>Wheels (thickness x diameter)</b>	32 x 200mm (1.25 x 8")	32 x 200mm (1.25 x 8")	32 x 200mm (1.25 x 8")	32 x 200mm (1.25 x 8")
<b>Brakes</b>	-	2 brakes	2 brakes	2 brakes
<b>Ball storage</b>	yes / 4 balls	yes / 4 balls	yes / 6 balls	yes / 6 balls
<b>Racket storage</b>	yes / 2 rackets	yes / 2 rackets	yes / 4 rackets	yes / 4 rackets
<b>Corner protection pads</b>	-	-	-	-
<b>Additional features</b>	-	-	2 Point counters	2 Point counters
<b>Category (European Standards)</b>	CLASS D EN 14468	CLASS D EN 14468	CLASS C EN 14468	CLASS C EN 14468
<b>Approval</b>	FFTT leisure	FFTT leisure	FFTT leisure (high quality)	FFTT leisure (high quality)
<b>Table weight</b>	47 kg (104lbs)	54 kg (120lbs)	56 kg (124lbs)	58 kg (128lbs)
<b>Packaged weight</b>	56 kg (124lbs)	63 kg (139lbs)	66 kg (146lbs)	68 kg (150lbs)
<b>Warranty</b>	10 years 20 years repairable	10 years 20 years repairable	10 years 20 years repairable	10 years 20 years repairable

## FOR WHOM ?

Home & private use	++	++	+++	+++
Clubs & tournaments				
Schools				
Public parks				
Hospitality			+	+
Corporate & events				

## LEISURE TABLE RANGE

Performance outdoor



	500X	600X	700X
<b>Use</b>	OUTDOOR	OUTDOOR	OUTDOOR
<b>References</b>	113100 ■ 113400 ■	113101 ■ 113401 ■	113 402 ■
<b>Playing surface</b>	Resin laminate 6mm	Resin laminate 7mm	Resin laminate 8mm
<b>Coating</b>	MATTOP	MATTOP	MATTOP
<b>Frame height</b>	50mm (2") / Alu-zinc	60mm (2,5") / Alu-zinc	60mm (2,5") / Alu-zinc painted black
<b>Locking system</b>	DSI (16 points)	DSI (16 points)	DSI (16 points)
<b>Compact Technology</b>	yes	yes	yes
<b>Leg type / dimensions</b>	Tapered / 110-65 - 65mm (4-3" - 3")	Tapered / 120-80 - 80mm (5-3" - 3")	Tapered / 120-80 - 80mm (5-3" - 3") painted black
<b>Adjustable leg pad</b>	3D adjustable diam. 104mm (4")	3D adjustable diam. 104mm (4")	3D adjustable diam. 104mm (4")
<b>Net type</b>	Retractable	Retractable	Retractable
<b>Adjustable net</b>	Tension - height	Tension - height	Tension - height
<b>Wheel type</b>	Special outdoor double wheels	Special outdoor double wheels	Special outdoor double wheels
<b>Wheels (thickness x diameter)</b>	32 x 200mm (1.25 x 8")	32 x 200mm (1.25 x 8")	32 x 200mm (1.25 x 8")
<b>Brakes</b>	2 brakes	2 brakes	4 brakes
<b>Ball storage</b>	yes / 6 balls	yes / 6 balls	yes / 6 balls
<b>Racket storage</b>	yes / 4 rackets	yes / 4 rackets	yes / 4 rackets
<b>Corner protection pads</b>	yes	yes	yes
<b>Additional features</b>	2 Point counters 2 Storage compartments	2 Point counters 2 Storage compartments 2 Retractable cup-holders 2 Ball dispensers 1 Crossing handle	2 Point counters 2 Storage compartments 2 Retractable cup-holders 2 Ball dispensers 1 Crossing handle 8 wheel trims
<b>Category (European Standards)</b>	CLASS C EN 14465	CLASS C EN 14465	CLASS C EN 14465
<b>Approval</b>	FFTT leisure (high quality)	FFTT leisure (high quality)	FFTT leisure (high quality)
<b>Table weight</b>	66 kg (146lbs)	77 kg (170lbs)	89 kg (196lbs)
<b>Packaged weight</b>	78 kg (172lbs)	90 kg (198lbs)	102 kg (225lbs)
<b>Warranty</b>	10 years 20 years repairable	10 years 20 years repairable	10 years 20 years repairable

### FOR WHOM ?

<b>Home &amp; private use</b>	+++	+++	+++
<b>Clubs &amp; tournaments</b>			
<b>Schools</b>	+	+	+
<b>Public parks</b>			
<b>Hospitality</b>	+	++	+++
<b>Corporate &amp; events</b>	+	++	+++



# LEISURE TABLE RANGE

## indoor



	Challenger	100	300	400	500
<b>Use</b>	INDOOR	INDOOR	INDOOR	INDOOR	INDOOR
<b>References</b>	110 102 ■	110 100 ■	110 103 ■	110 104 ■	114 100 ■ 114 300 ■
<b>Playing surface</b>	Chipboard 16mm	Chipboard 18mm	Chipboard 18mm	Chipboard 22mm	Chipboard 22mm
<b>Coating</b>	-	-	-	-	-
<b>Frame height</b>	30mm (1") / Alu-zinc	35mm (1,4") / Alu-zinc	40mm (1,6") / Alu-zinc	50mm (2") / Alu-zinc	50mm (2") / Alu-zinc
<b>Locking system</b>	Push 'n Lock (8 points)	Push 'n Lock (8 points)	DSI (16 points)	DSI (16 points)	DSI (16 points)
<b>Compact Technology</b>	yes	yes	yes	yes	yes
<b>Leg type / dimensions</b>	Straight / diam. 25mm (1")	Straight / diam. 25mm (1")	Straight / diam. 38mm (1,5")	Straight / diam. 38mm (1,5") painted black	Tapered / 120-80 - 80mm (5-3" - 3")
<b>Adjustable leg pad</b>	-	1D ajustable diam. 50mm (2")	3D ajustable diam. 104mm (4")	3D ajustable diam. 104mm (4")	3D ajustable diam. 104mm (4")
<b>Net type</b>	Fixed	Fixed	Folding	Folding	Retractable
<b>Adjustable net</b>	Tension	Tension	Tension	Tension	Tension - height
<b>Wheel type</b>	Double wheels monobloc notched	Double wheels monobloc notched	Double wheels monobloc notched	Solid rubber double wheels Special indoor	Solid rubber double wheels Special indoor
<b>Wheels (thickness x diameter)</b>	20 x 150mm (1 x 6")	20 x 150mm (1 x 6")	20 x 150mm (1 x 6")	30 x 150mm (1,2 x 6")	30 x 150mm (1,2 x 6")
<b>Brakes</b>	-	-	2 brakes	2 brakes	2 brakes
<b>Ball storage</b>	-	yes / 4 balls	yes / 6 balls	yes / 4 balls	yes / 6 balls
<b>Racket storage</b>	-	-	-	-	-
<b>Corner protection pads</b>	-	-	-	yes	yes
<b>Additional features</b>	-	-	-	-	2 Storage compartments
<b>Category (European Standards)</b>	CLASS D EN 14468	CLASS D EN 14468	CLASS C EN 14468	CLASS C EN 14468	CLASS C EN 14468
<b>Approval</b>	FFTT leisure (high quality)	FFTT leisure (high quality)	FFTT leisure (high quality)	FFTT leisure (high quality)	FFTT leisure (high quality)
<b>Table weight</b>	58kg (128lbs)	70kg (154lbs)	73kg (161lbs)	87kg (192lbs)	91kg (201lbs)
<b>Packaged weight</b>	67kg (148lbs)	80kg (176lbs)	85kg (187lbs)	99kg (218lbs)	104kg (229lbs)
<b>Warranty</b>	3 years 20 years repairable	3 years 20 years repairable	3 years 20 years repairable	3 years 20 years repairable	3 years 20 years repairable

## FOR WHOM ?

<b>Home &amp; private use</b>	++	+++	+++	+++	+++
<b>Clubs &amp; tournaments</b>					
<b>Schools</b>			+	++	+++
<b>Public parks</b>					
<b>Hospitality</b>			+	++	+++
<b>Corporate &amp; events</b>			+	++	+++

# INSTITUTIONAL TABLE RANGE

## outdoor



	CAMPUS	URBAN	PARK	PRO 540	740 LONGLIFE
<b>Use</b>	OUTDOOR	OUTDOOR	OUTDOOR	OUTDOOR	OUTDOOR
<b>References</b>	112 302 ■ 112 100 ■	112 301 ■	127 157 ■	112 300 ■	117 817 ■
<b>Playing surface</b>	Resin laminate 7mm	Resin laminate 7mm	Resin laminate 9mm	Resin laminate 7mm	Resin laminate 9mm
<b>Coating</b>	MATTOP	MATTOP	MATTOP	MATTOP	MATTOP
<b>Frame height</b>	60mm (2.5") / Alu-zinc	70mm (3") / Alu-zinc	70mm (3") / Alu-zinc	60mm (2.5") / Alu-zinc	85mm (3.5") / Alu-zinc
<b>Locking system</b>	Static	Static	Static	DSI (16 points)	DSI (16 points)
<b>Compact Technology</b>	-	-	-	yes	yes
<b>Leg type / dimensions</b>	Steel curve	Galvanised steel Square / 60 x 60mm (2.5" x 2.5")	Galvanised steel diam. 90mm (3.5")	Tapered / 110-65 - 65mm (4.5-2.5" - 2.5")	Steel painted black 120 x 60mm (5 x 2.5")
<b>Ground fixing</b>	Floor screw kit included	Floor screw kit included	Floor screw kit included Ballast kit (170kg/375lbs) optional Anchoring kit optional	-	-
<b>Adjustable leg pad</b>	-	-	-	3D adjustable diam. 104mm (4")	diam. 135mm (5.5")
<b>Net type</b>	Fixed Galvanised steel painted white Standard fabric net Kit optional	Fixed Galvanised steel + plastic protection	Fixed Galvanised steel painted white Standard fabric net Kit optional	Fixed Galvanised steel painted white Standard fabric net Kit optional	Retractable
<b>Adjustable net</b>	Tension - height (with Advance Kit)	-	Tension - height (with Advance Kit)	Tension - height (with Advance Kit)	Tension - height
<b>Wheel type</b>	-	-	-	Double wheels Special outdoor	Ball bearing wheels Special indoor
<b>Wheels (thickness x diameter)</b>	-	-	-	32 x 200mm (1.25 x 8")	35 x 125mm (1.5 x 5")
<b>Brakes</b>	-	-	-	2 brakes	4 brakes
<b>Ball storage</b>	yes / 10 balls	-	-	-	-
<b>Racket storage</b>	yes 4 rackets	-	-	-	-
<b>Corner protection pads</b>	yes Integrated rounded corners	yes Integrated rounded corners	yes Integrated rounded corners	yes	-
<b>Category (European Standards)</b>	CLASS B EN 14468 / EN 15312	CLASS B EN 14468 / EN 15312 PPM Standards	CLASS B EN 14468 / EN 15312 PPM Standards	CLASS B EN 14468 / EN 15312	CLASS B EN 14468
<b>Approval</b>	FFTT leisure (high quality) & school	FFTT leisure (high quality) & school	FFTT leisure (high quality) & school	FFTT leisure (high quality) & school	FFTT loisir (high quality) & school
<b>Table weight</b>	87kg (192lbs)	105kg (232lbs)	150kg (330kg with ballast kit) 320lbs (705lbs with ballast kit)	86kg (190lbs)	111kg (245lbs)
<b>Packaged weight</b>	99kg (218lbs)	2 box of 76kg (2x168lbs)	2 box of 88kg (2x194lbs) without any fastening kit	100kg (220lbs)	128kg (282lbs)
<b>Warranty</b>	10 years 20 years repairable	10 years 20 years repairable	10 years 20 years repairable	10 years 20 years repairable	10 years 20 years repairable

## FOR WHOM ?

<b>Home &amp; private use</b>					+
<b>Clubs &amp; tournaments</b>					++
<b>Schools</b>	+++	+++	+++	+	+++
<b>Public parks</b>	++	+++	+++		
<b>Hospitality</b>	+++	+++	+++	++	+++
<b>Corporate &amp; events</b>	+++	+++	+++	+	+++

**LEISURE RACKET RANGE**  
 outdoor & indoor

	Product name	Ref	Details	Blade	Rubber
COMPOSITE	<b>SOFTBAT</b>	● 454 705 ● 454 706 ● 454 707	1 racket	Recycled thermoplastic	Elastomer
	<b>SOFTBAT PACK DUO</b>	●● 454 750	2 rackets	Recycled thermoplastic	Elastomer
	<b>SOFTBAT PACK QUATTRO</b>	●●●● 454 755	4 rackets + 4 balls	Recycled thermoplastic	Elastomer
	<b>SOFTBAT SCHOOL</b>	● 454 700	10 rackets	Recycled thermoplastic	Elastomer
	<b>TACTEO</b>	● 455 305 ● 455 306 ● 455 307	1 racket	Thermoplastic	Elastomer
	<b>TACTEO PACK DUO</b>	●● 455 350	2 rackets + 3 balls	Thermoplastic	Elastomer
	<b>TACTEO SCHOOL</b>	● 453 300	10 rackets	Thermoplastic	Elastomer
	<b>NEXEO X70</b>	457 600	1 racket	Thermoplastic	Foamed elastomer
	<b>NEXEO X90</b>	459 600	1 racket	Thermoplastic	Foamed elastomer
	<b>NEXEO X200 GRAPHITE</b>	462 600	1 racket	Glass fibre + Decorative carbon fibre	Foamed elastomer
WOOD	<b>SPORT 100</b>	441 000	1 racket	Wood	ITTF 1 star
	<b>SPORT 200</b>	432 000	1 racket	Wood	ITTF 2 stars
	<b>SPORT 300</b>	433 000	1 racket	Wood	ITTF 2 stars
	<b>SPORT 400</b>	434 000	1 racket	Wood	ITTF 3 stars
	<b>PACK SOLO</b>	432 052	1 racket + racket cover	Wood	ITTF 2 stars
	<b>PACK DUO</b>	432 050	2 rackets + 3 balls	Wood	ITTF 2 stars
	<b>PACK QUATTRO</b>	432 053	4 rackets + 4 balls	Wood	ITTF 1 star
	<b>PERFORM 500</b>	425 000	1 racket	Wood	ITTF 3 stars
	<b>PERFORM 600</b>	426 000	1 racket	Wood	ITTF 4 stars
	<b>PERFORM 800</b>	428 000	1 racket	Wood	ITTF 5 stars
	<b>EXCELL 1000</b>	411 000	1 racket	Wood	ITTF 6 stars
	<b>EXCELL 2000 CARBON</b>	412 000	1 racket	Wood	ITTF 6 stars
	<b>EXCELL 3000 CARBON</b>	413 000	1 racket	Wood	ITTF 6 stars



Technology	Speed	Spin	Control	Colour of sponge	Thickness of sponge (mm)	Plywood
Green racket + Softskin	6	6+	8+			
Green racket + Softskin	6	6+	8+			
Green racket + Softskin	6	6+	8+			
Green racket + Softskin	6	6+	8+			
Skin+	7	7+	7+			
Skin+	7	7+	7+			
Skin+	5	5+	8+			
	8,5	8,5	8			
Carbon Fiber	9	8,5	7,5			
Graphite Inside, Extra Light	9,5	9	7			
	3	3	10	White	1,5	5
	5	4	9	White	1,8	5
	6	5	9	White	1,8	5
	7	6	8	White	1,8	5
	5	5	9	White	1,8	5
	4	4	9	White	1,5	5
	3	3	10	White	1,5	5
Aero	7	7	8	White	1,8	5
Aero, OFC	7,5	7	7,5	White	1,8	5
Aero, Dynacell ,OFC	8	8	7	Orange	1,8	5
Aero Soft, Dynacell, OFC, Efficient Curve	8,5	8,5	6,5	Orange	2,0	5
Carbon technology, Aero Soft, Dynacell, OFC, Efficient Curve	9	9	6	White	2,0	5
Carbon technology, Aero Soft, Dynacell, OFC, Efficient Curve	10	10	5	White	2,2	5



# Cornilleau

TOGETHER WE PLAY

## **Cornilleau**

14 route nationale - 60120 Bonneuil-les-Eaux - Tel : + 33 (0)3 44 80 22 22  
contact : [export@cornilleau.fr](mailto:export@cornilleau.fr) - site web : [www.cornilleau.com](http://www.cornilleau.com)

## **Cornilleau America Inc.**

6832 E Genesee st Fayetteville, NY 13066 - Tel : 678 - 257 - 4350  
contact : [support@cornilleau.com](mailto:support@cornilleau.com)

## **Cornilleau UK**

Unit 4 Lloyds Court, Manor Royal, Crawley West Sussex RH10 9QU  
Tel:01293 243980 - contact : [sales.uk@cornilleau.com](mailto:sales.uk@cornilleau.com)



902237